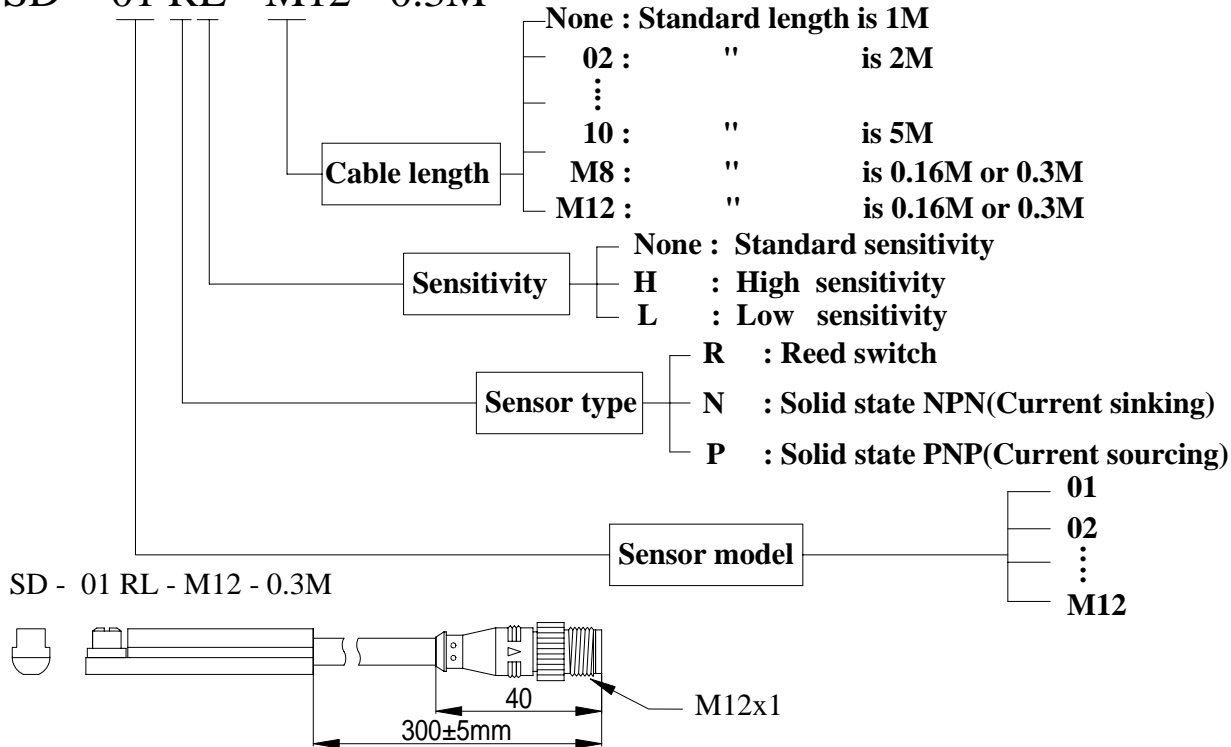


# Ordering information

SD - 01 RL - M12 - 0.3M



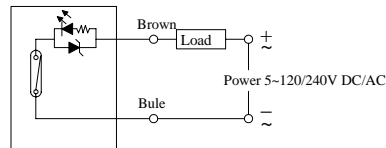
## \* Instructions on how to use the sensors properly :

§ Particular at tention must be paid not to exceed he working limits list.Do not exceed specification. §

\* 1. Reed switch type connection polarities must be respected.

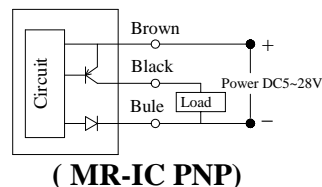
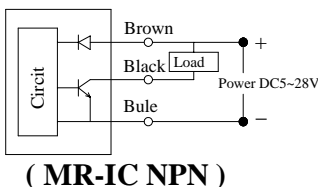
2.Connect the brown wire series load to the positive (+) and the blue to the negative (-) of power source.

2-1.If these are inverted the sensor remains switched,the load connected and the LED turned off; however this would not damage the circuit.



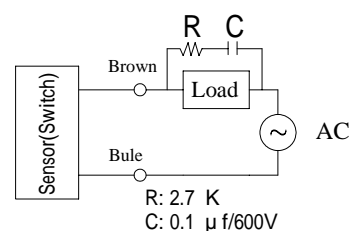
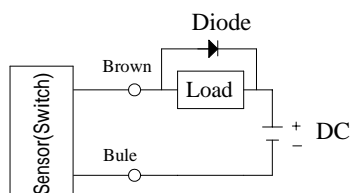
\* 1.Solid state and reed three-wire type connection polarities must be respected.Ex.as illustrated below.

2.The black wire have to connect to the "Load".If the sensor perhaps be damaged.



\* 1.The external protect element is required.If sensor is used with inductive load.Ex.relay、 solenoid valve.

2.The load inductive as illustrated below : DC use diode ; AC use R-C circuit.



\* Keep out the strong magentic、 metal and high frequency field to get rid of interference.